



## **Program of Study Modification policy**

### **Curriculum offer aim:**

At The Thomas Adams School Sixth Form students, study 3 subjects, with the opportunity to study the Extended Project Qualification (EPQ), equivalent of 0.5 A levels with GCSE resit study available. Students also are allocated 5 supervised Directed study periods across a week as well as are timetabled a 5 x 20 Minute form tutor sessions Additional super curriculum, formal enrichment and work experience opportunities/activities will also be integrated into students' two-year program of study.

As a Sixth Form we aim to ensure all students are supported in their academic studies. However, we do recognise, under certain circumstances, there may be a need to make modifications to a student's timetable. However, the responsibility of the sixth form leadership is to ensure the student understands the potential implications such modifications can have on post 18 destination options.

## **Key principles for modified timetables Post 16**

There are several situations where students may require a modified timetable:

1. A student is failing to cope with the demands of their A-Level course and is suffering undue stress due to continuation of the course.
2. A student has medical grounds for a reduced timetable. EG serious long-term illness, Mental Health issue.
3. There is a substantiated Teacher concern about the student's ability to cope with the demands of the course. This will be supported using relevant tracking point and assessment data after a series of interventions, both in subject and whole 6<sup>th</sup> form.  
*See Intervention Overview Document*

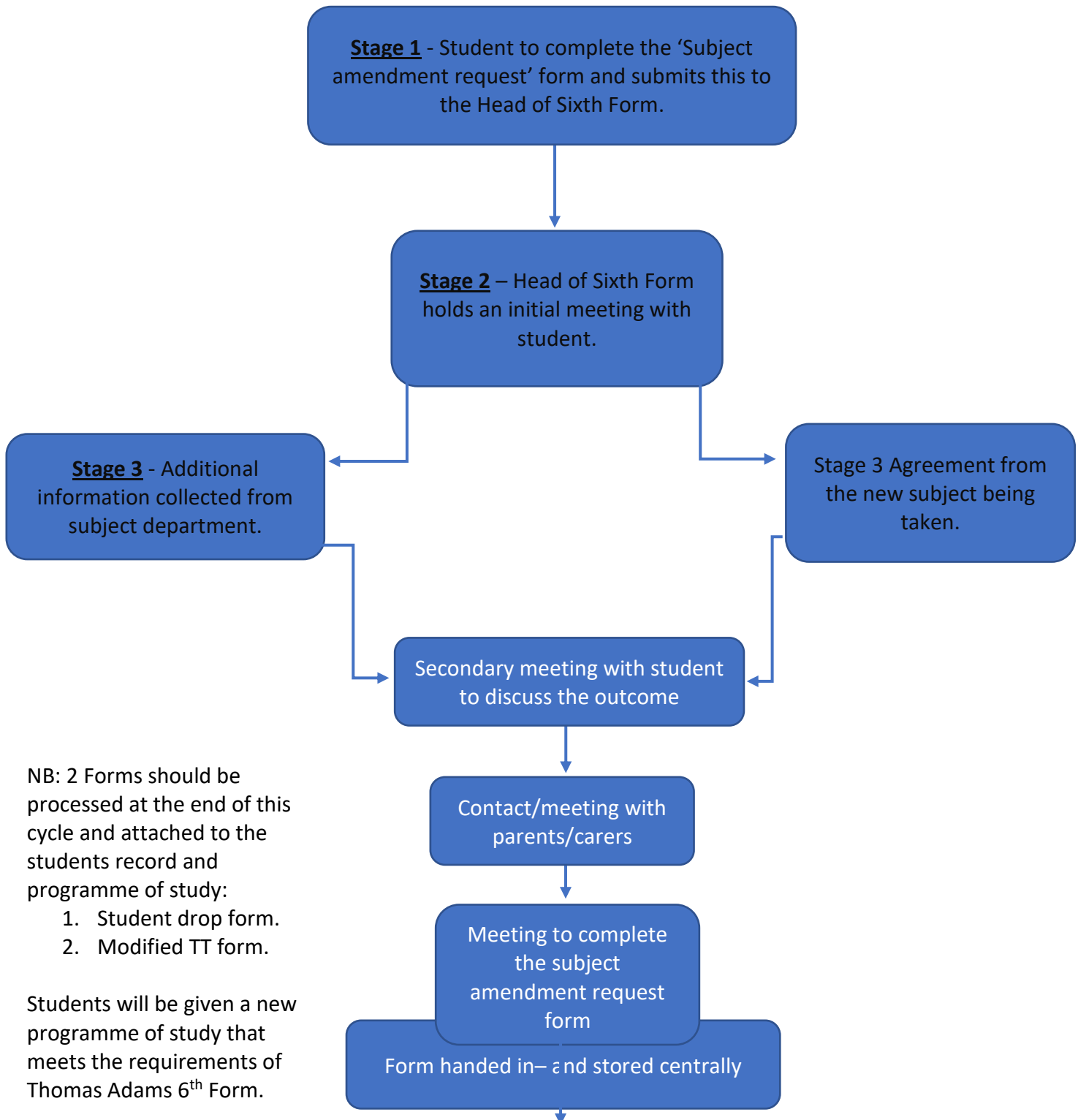
In a circumstance where a student requests to swap from one subject to another, this must be done before October half term of year 12, authorised by Sixth Form Leadership and subject teachers. After this time the Assistant Head Teacher i/c of 6<sup>th</sup> form will make the overarching decision.

If a swap is to happen, the following must be in place:

- 1) Student subject amendment request form must be completed by the student.
- 2) Subject staff agreement.
- 3) Catchup work is the responsibility of the student to complete.



**Decision stages:**



NB: 2 Forms should be processed at the end of this cycle and attached to the students record and programme of study:

1. Student drop form.
2. Modified TT form.

Students will be given a new programme of study that meets the requirements of Thomas Adams 6<sup>th</sup> Form.